



TAI-SAW TECHNOLOGY CO., LTD.

No. 3, Industrial 2nd Rd., Ping-Chen Industrial District,
Taoyuan, 324, Taiwan, R.O.C.

TEL: 886-3-4690038 FAX: 886-3-4697532

E-mail: tstsales@mail.taisaw.com Web: www.taisaw.com

Product Specifications Approval Sheet

Product Description: 942MHz 24MHz BW SMD 7.0 x 5.0 mm SAW IF Filter

TST Parts No.: TB0841A

Customer Parts No.: _____

Customer signature required
Company: _____
Division: _____
Approved by : _____
Date: _____

Checked by: _____ Kazuma Lee *Kazuma Lee*

Approval by: _____ Bob Chau *Bob Chau*

Date: _____ 11/18/2016

1. Customer signed back is required before TST can proceed with sample build and receive orders.
2. Orders received without customer signed back will be regarded as agreement on the specifications.
3. Any specifications changes must be approved upon by both parties and a new revision of specifications shall be released to reflect the changes.



TAI-SAW TECHNOLOGY CO., LTD.

No. 3, Industrial 2nd Rd., Ping-Chen Industrial District,
Taoyuan, 324, Taiwan, R.O.C.

TEL: 886-3-4690038 FAX: 886-3-4697532

E-mail: tstsales@mail.taisaw.com Web: www.taisaw.com

IF SAW Filter 942MHz SMD 5.0X7.0mm

MODEL NO.: TB0841A

REV. NO.2

A. MAXIMUM RATING:

1. Operating temperature range: -40°C to 85°C
2. Storage temperature range: -40°C to 85°C
3. Input Power Level : 10 dBm
4. Maximum DC Voltage : 10V

RoHS Compliant
Lead free
Lead-free soldering

Electrostatic Sensitive Device

B. ELECTRICAL CHARACTERISTICS:

1. Ambient Temperature: 25 °

Characteristics	Value		
	Min.		Max.
Center frequency F_C MHz	-	942	-
Maximum Insertion loss I.L. dB	-	27.5	30.0
3dB Band Width MHz	24.0	27.8	-
30B Band Width MHz	-	30	33
Passband Ripple in $F_C \pm 10$ MHz dB	-	0.5	1.2
Group Delay in $F_C \pm 10$ MHz nsec	-	40	120
Absolute delay usec	-	0.80	-
Single Input Impedance Ohm	-	50	-
Single Output Impedance Ohm	-	50	-
Temperature Coefficient ppm/°C ²	-	-0.036	-

C. FREQUENCY CHARACTERISTICS:

1. Wide band response

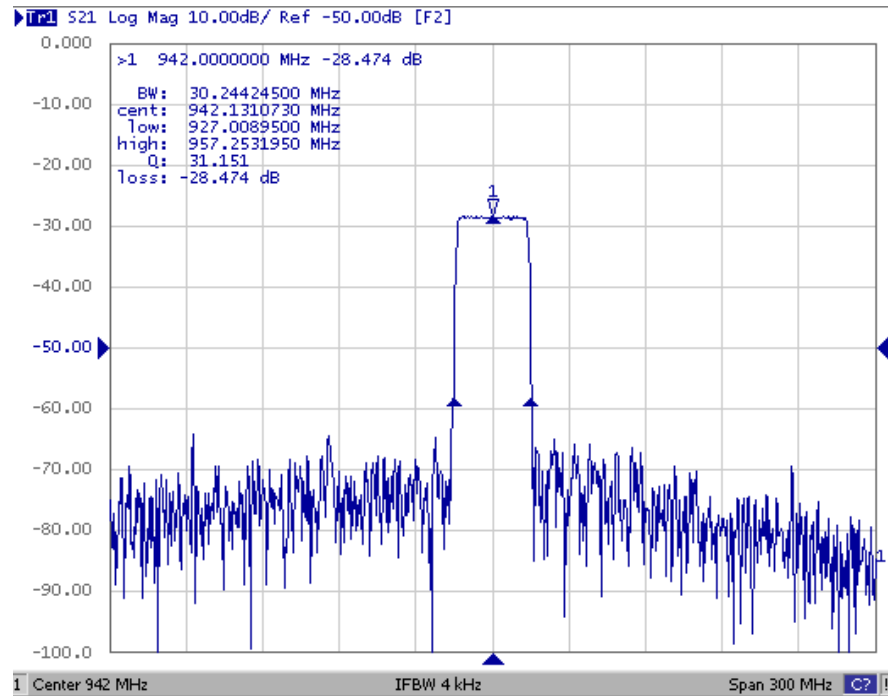


Fig1. Horizontal: 30MHz/Div Vertical: 10dB/Div

2. Pass band & Group Delay response

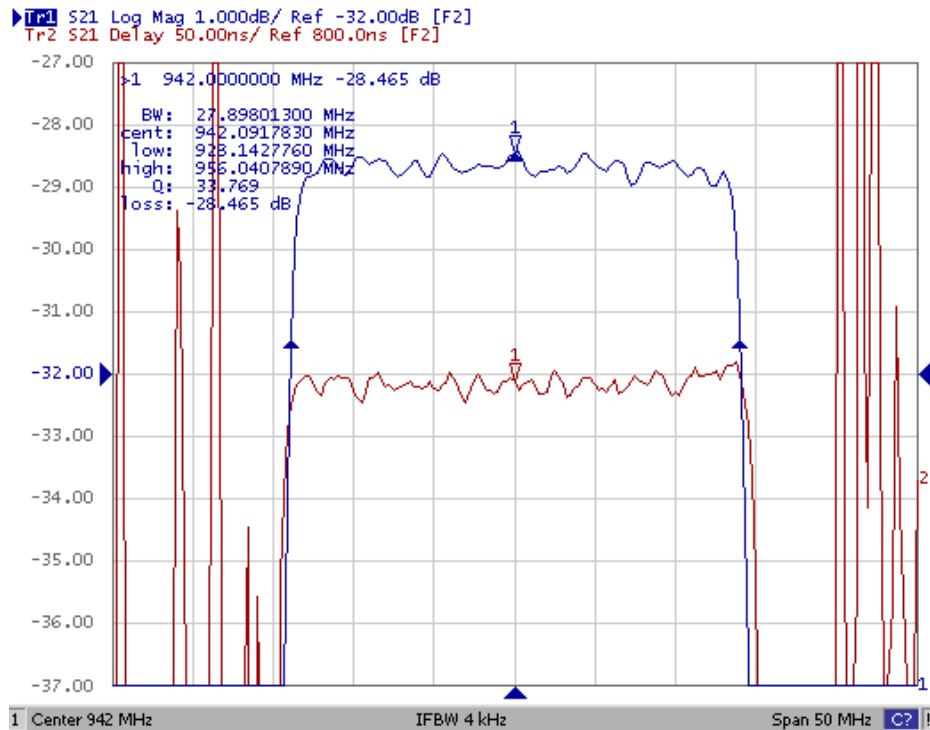
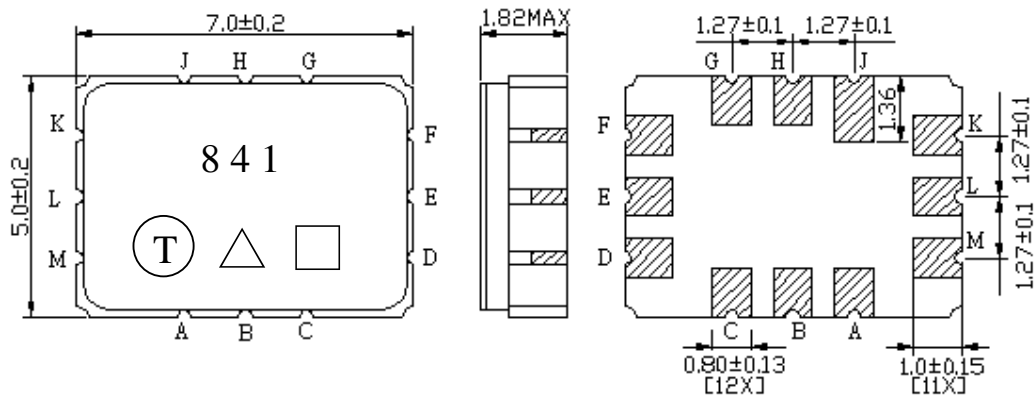


Fig2. Horizontal: 5MHz/Div Vertical: 1dB/Div
Vertical: 50ns/Div

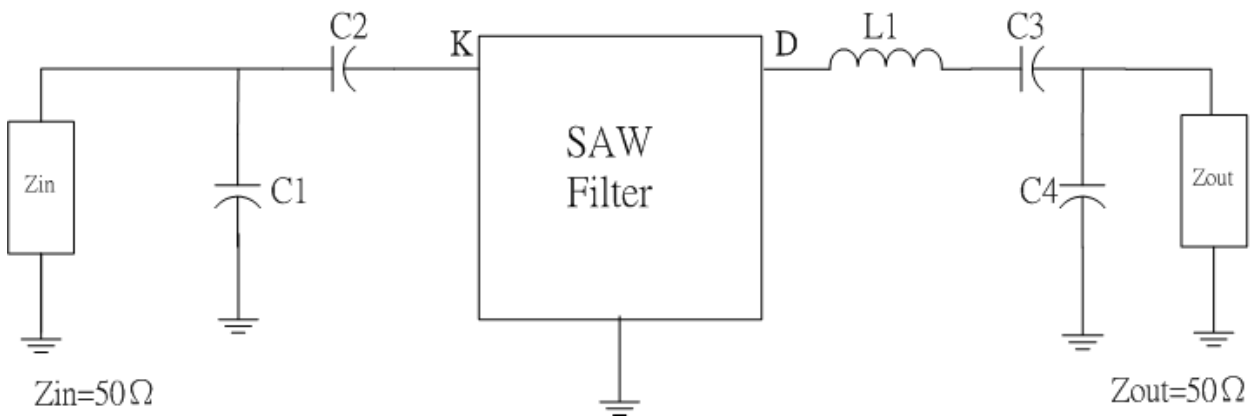
D. MATCHING CIRCUIT:



- Pin K –RF input
- Pin D –RF output
- Pin A, B, C, E, F, G, H, J, L, M - Ground
- : Week Code
- Unit : mm
- △ : Product / Year Code

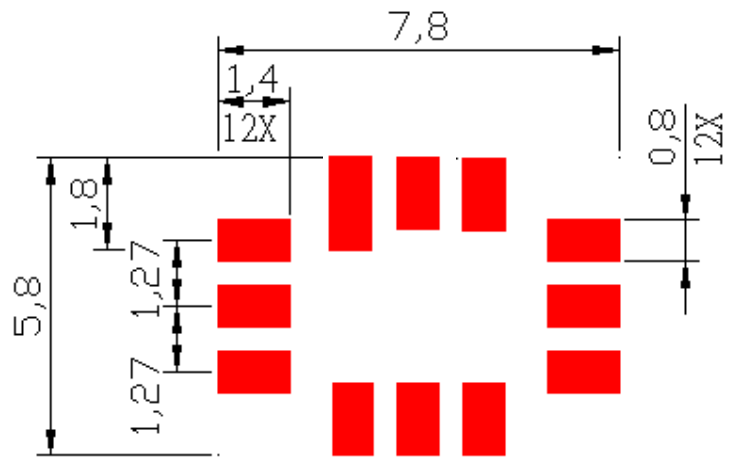
Year	2013 2017	2014 2018	2015 2019	2016 2020
Product Code	B	b	<u>B</u>	<u>b</u>

E. Measurement Circuit:



L1=3nH C1=10pF C2=32pF C3=18pF C4=9pF

F. PCB FOOTPRINT:



G. PACKING:

1. REEL DIMENSION (Please refer to FR-75D10 for packing quantity)

